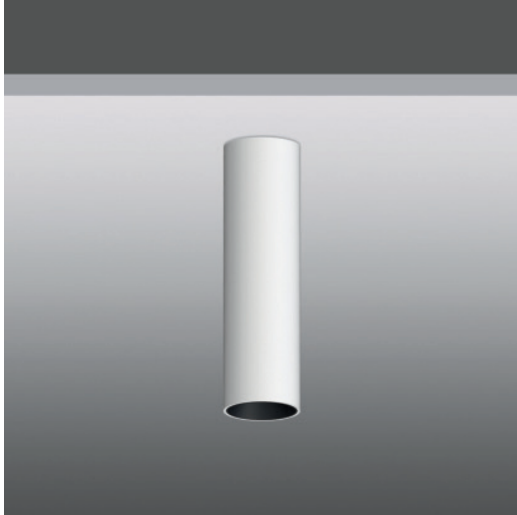


DOWNLIGHT



MONTI



MONTI

Surface Mounted LED Cylinder Downlight lamp with stylish appearance.

High quality COB LED chip, high power, high lumen and pure color.

The color of surface ring is replaceable, which could create diversified light atmosphere according to different environment.

Aluminum radiator in sand blast oxidation treatment provides excellent heat dissipation and corrosion resistance.

The built-in power supply with high conversion efficiency is stable and reliable.

Application for star hotel, restaurant, shopping mall, villa, residence and other high-end projects.



References

Reference	Led Power	Luminous flux	CCT/K	OPTICS	IP Rating	Dimensions	Adjustable
LX-DL-8501	8W	15° : 643lm 24° : 664lm 38° : 632lm	2700K/3000K/4000K	15°/24°/38°	IP54	Ø50*180mm	—
LX-DL-8601	15W	15° : 1137lm 23° : 1130lm 36° : 1215lm		15°/23°/36°		Ø60*180mm	
LX-DL-8701	20W	15° : 1570lm 24° : 1551lm 38° : 1500lm		15°/24°/38°		Ø70*180mm	

Order code : Reference - Power - Luminous flux - CCT/K - Optic

Important : All the specification can be customized as per the project request .

OPTICS

LX-DL-8501/LX-DL-8701



15°

24°

38°

LX-DL-8601



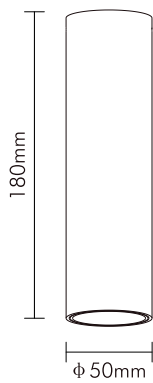
15°

23°

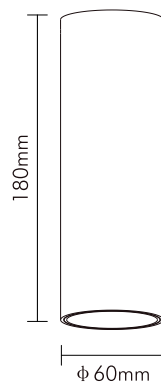
36°

Dimensions

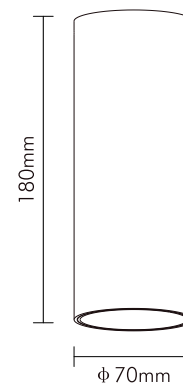
LX-DL-8501



LX-DL-8601



LX-DL-8701



Feature

