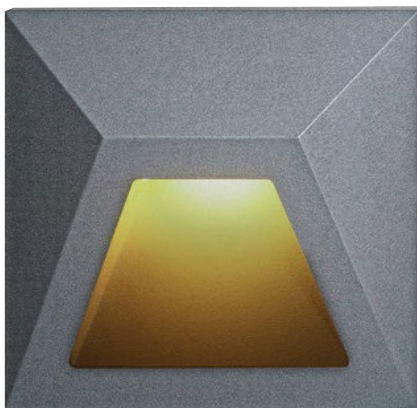


WALL LIGHT

LX-WL-1CN0634-4W



Wall Light

HOUSING 12# Die-casting dark grey powder coated aluminum
T=60-80µm. Adhesion of ISO class 1/ASTM class 4B

LIGHT WINDOW UVstop & Fireproof PC

CABLE GLAND IP66

GASKET Tooling shaped seal

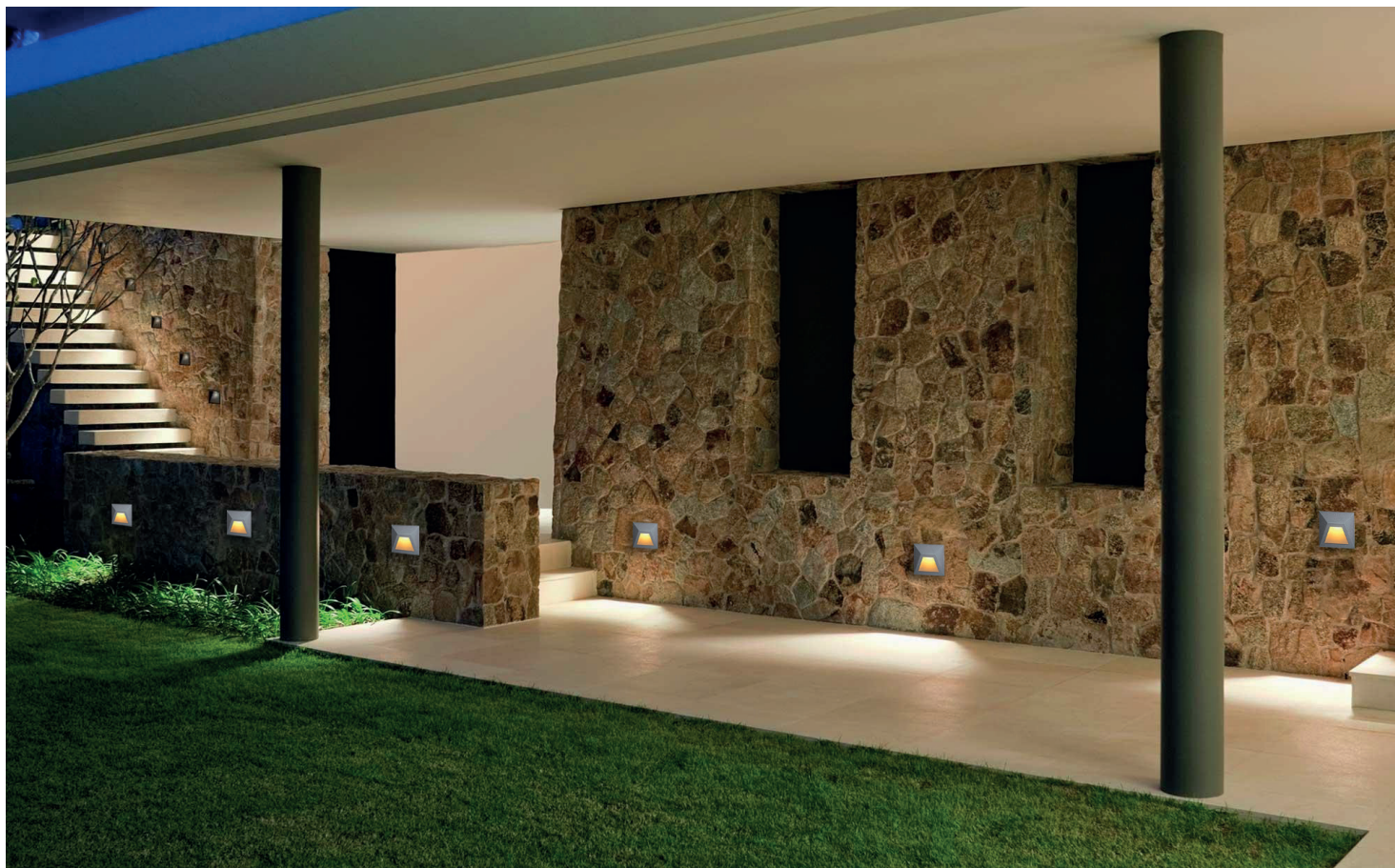
RECESSED SLEEVE PC/ABS ALLOYS 150#

LED DRIVER Constant Voltage Input, Constant Current Output

OPERATING TEMPERATURE -20°C~40°C

POWER CABLE AC power: H05RN-F 3×1.0mm² L=0.3m (high voltage)
DC power: H05RN-F 2×1.0mm² L=0.3m (high voltage)

DIMMABLE SUPPORT DC24V Track (included)
DC24V 0~10V (option)
DC24V Dali (option)



luxio
L I G H T I N G

www.luxio-lighting.com

References

Reference	Led Power	Input Voltage	Led Quantity	Luminous flux	CCT/K	IP Rating	Dimensions
LX-WL-1CN0634-4W	6×0.6W	DC24V AC120-240V	6pcs	130lm	2000K/3000K /6000K	IP65	L120×H120×W53.5mm

Order code : Reference - Power - Luminous flux - CCT/K - Optic

Important : All the specification can be customized as per the project request .

Housing color option

Basic



Dark Grey
KAP 7037

Secondary

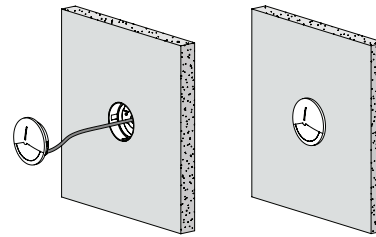


Silver Grey
KAP 9022

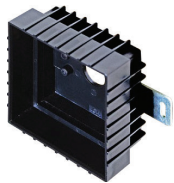
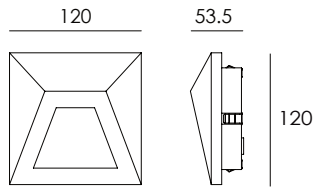


Sanded Black
RAL 9005

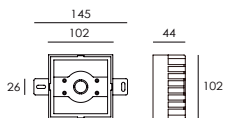
Diagram of instruction



Dimensions



Recessed Sleeve 150# (Included)



Features



· Front cover without screws



· Use the high-strength clips for installation and fixation.
(please refer remark ① & ②)