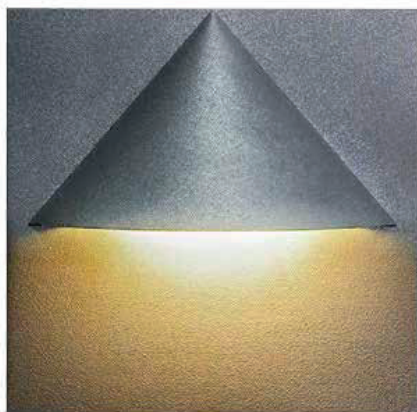


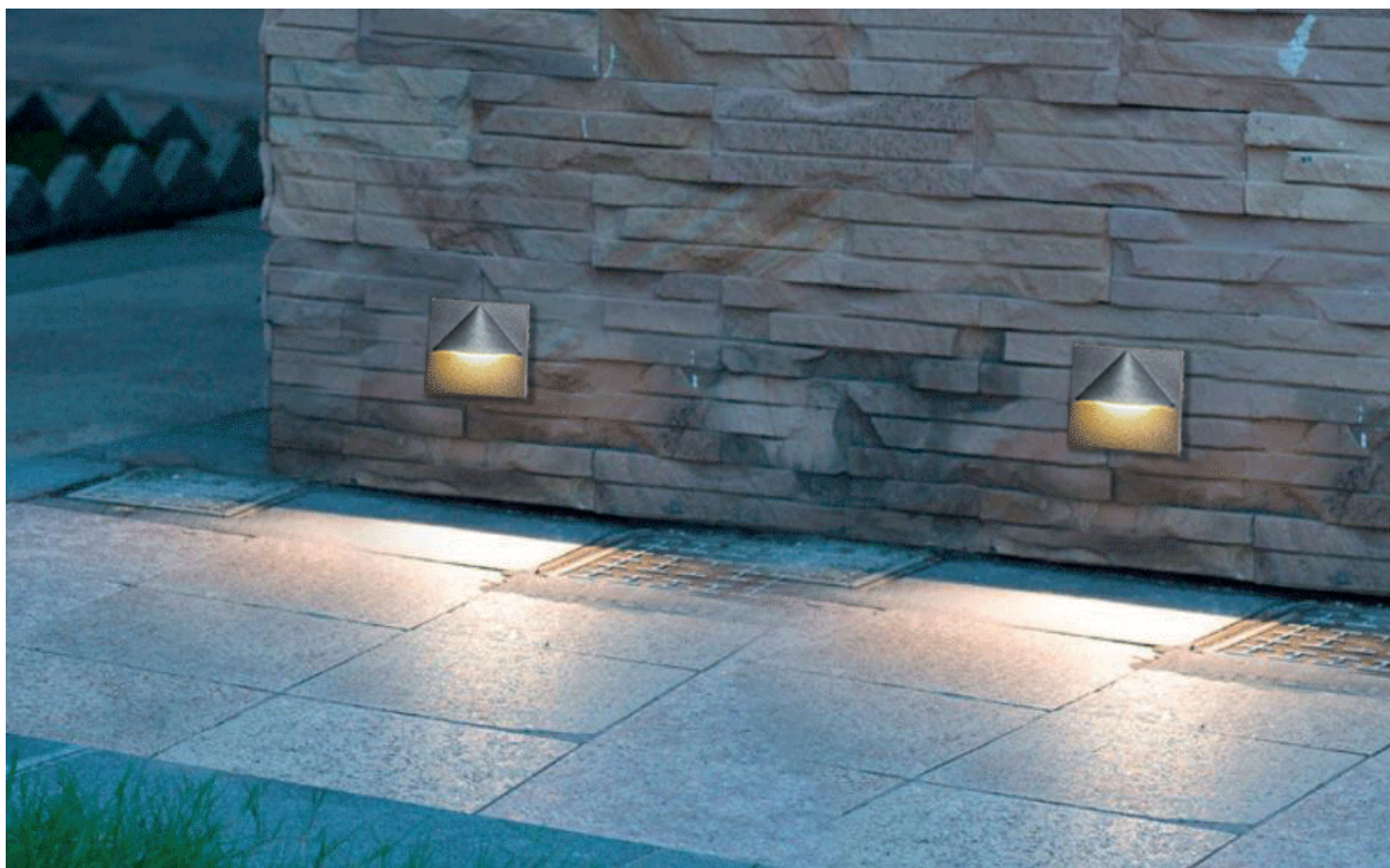
# WALL LIGHT

LX-WL-1CY0934-6W



## Wall Light

HOUSING	12# Die-casting dark grey powder coated aluminum T=60-80µm. Adhesion of ISO class 1/ASTM class 4B
LIGHT WINDOW	UVstop & Fireproof PC
CABLE GLAND	IP66
GASKET	Tooling shaped seal
RECESSED SLEEVE	PC/ABS ALLOYS 150#
LED DRIVER	Constant Voltage Input, Constant Current Output
OPERATING TEMPERATURE	-20°C~40°C
POWER CABLE	AC power: H05RN-F 3×1.0mm <sup>2</sup> L=0.3m (high voltage) DC power: H05RN-F 2×1.0mm <sup>2</sup> L=0.3m (high voltage)
DIMMABLE SUPPORT	DC24V Track (included) DC24V 0~10V (option) DC24V Dali (option)



## References

Reference	Led Power	Input Voltage	Led Quantity	Luminous flux	CCT/K	IP Rating	Dimensions
LX-WL-1CY0934-6W	9×0.5W	DC24V AC120-240V	9pcs	157lm	2000K/3000K /6000K	IP65	L120×H120×W59.5mm

Order code : Reference - Power - Luminous flux - CCT/K - Optic

Important : All the specification can be customized as per the project request .

## Housing color option

Basic

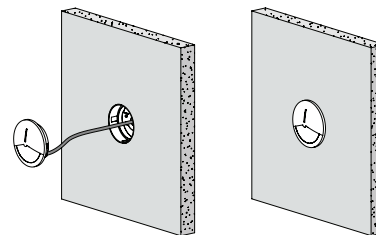
Dark Grey  
**KAP 7037**

Secondary

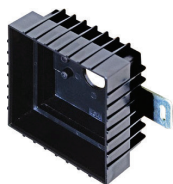
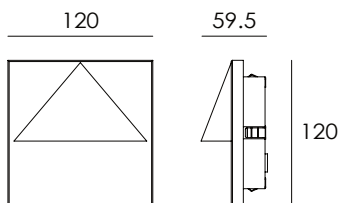
Silver Grey  
**KAP 9022**

Sanded Black  
**RAL 9005**

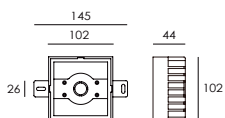
## Diagram of instruction



## Dimensions



Recessed Sleeve **150#** (Included)



## Features



· Front cover without screws



· Use the high-strength clips for installation and fixation.  
(please refer remark **1** & **2**)