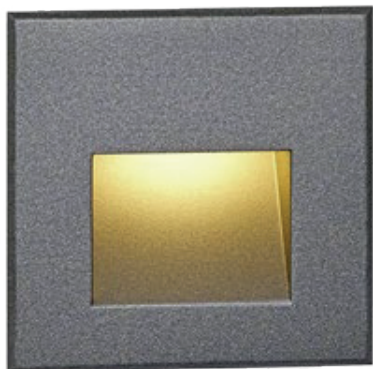


WALL LIGHT

LX-WL-1GA0334-3W



Wall Light

FRONT COVER	12# Die-casting aluminum KAP7037 powder coated t=60-80µm. Adhesion of ISO CLASS 1 / ASTM class 4B
HOUSING	12# Die-casting RAL9005 powder coated aluminum T=60-80µm. Adhesion of ISO class 1/ASTM class 4B
LIGHT WINDOW	UVstop & Fireproof PC
CABLE CABLE	IP67 copper and nicked coated
GASKET	Molding shaped silicone seal
LED DRIVER	Constant Voltage Input, Constant Current Output
OPERATING TEMPERATURE	-20°C-40°C
POWER CABLE	H05RN-F 2×1.0mm² L=0.5m (low voltage) H05RN-F 3×1.0mm² L=0.5m (high voltage)
LED	SMD3030 type LED
DIMMABLE SURPPOINT	Triac•PWM•1-10V•Dali (Please refer to p.333 to see more option and specification)



References

Reference	Led Power	Input Voltage	Led Quantity	Luminous flux	CCT/K	IP Rating	Dimensions
LX-WL-1GA0334-3W	3×0.7W	DC24V AC120-240V	3pcs	36-39lm	2000K/3000K /6000K	IP65	L72×H75×W47.5mm

Order code : Reference - Power - Luminous flux - CCT/K - Optic

Important : All the specification can be customized as per the project request .

Housing color option

Basic



Sanded Dark Grey
KAP 7037

Secondary

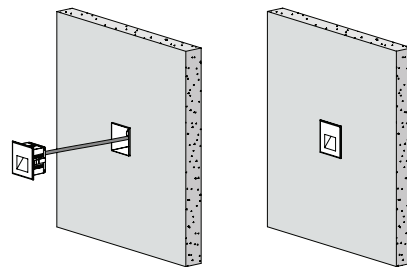


Sanded Black
RAL 9005



Silver Grey
KAP 9022

Diagram of instruction



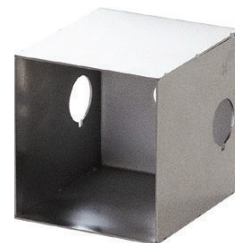
Dimensions



Features



- Use the high-strength clips for installation and fixation. (please refer remark ①)



Stainless steel
Recessed Sleeve