

WALL LIGHT

LX-WL-1GB0334-3W



Wall Light

| | |
|-----------------------|--|
| FRONT COVER | 12# Die-casting aluminum KAP7037 powder coated t=60-80µm. Adhesion of ISO CLASS 1 / ASTM class 4B |
| HOUSING | 12# Die-casting RAL9005 powder coated aluminum T=60-80µm. Adhesion of ISO class 1/ASTM class 4B |
| LIGHT WINDOW | UVstop & Fireproof PC |
| CABLE CABLE | IP67 copper and nicked coated |
| GASKET | Molding shaped silicone seal |
| LED DRIVER | Constant Voltage Input, Constant Current Output |
| OPERATING TEMPERATURE | -20°C-40°C |
| POWER CABLE | H05RN-F 2×1.0mm² L=0.5m (low voltage) H05RN-F 3×1.0mm² L=0.5m (high voltage) |
| LED | SMD3030 type LED |
| DIMMABLE SURPPORT | Triac•PWM•1-10V•Dali (Please refer to p.333 to see more option and specification) |



References

| Reference | Led Power | Input Voltage | Led Quantity | Luminous flux | CCT/K | IP Rating | Dimensions |
|------------------|-----------|---------------------|--------------|---------------|-----------------------|-----------|-----------------|
| LX-WL-1GB0334-3W | 3×0.7W | DC24V AC120-240V | 3pcs | 22-25lm | 2000K/3000K /6000K | IP65 | L72×H75×W47.5mm |

Order code : Reference - Power - Luminous flux - CCT/K - Optic

Important : All the specification can be customized as per the project request .

Housing color option

Basic



Sanded Dark Grey
KAP 7037

Secondary

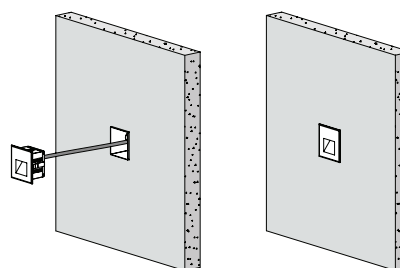


Sanded Black
RAL 9005

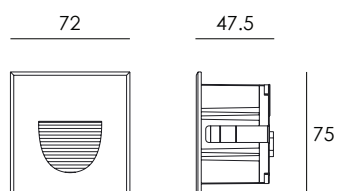


Silver Grey
KAP 9022

Diagram of instruction



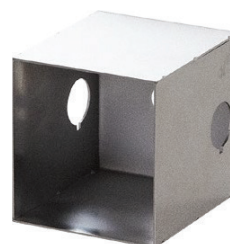
Dimensions



Features



- Use the high-strength clips for installation and fixation. (please refer remark ①)



Stainless steel
Recessed Sleeve