

# INGROUND



## LX-IG-57



### Inground

HOUSING	Extruded aluminum, powder coated
FRONT RING	Hard chromeplated Stainless steel SUS 316L#
LIGHT WINDOW	Tempered frosted step glass.T=6mm
OPERATING TEMPERATURE	-20°C~40°C
CABLE GLAND	IP68 PG-9 PA66
GASKET	Glass and housing are silicone sealed
LED Type	OSRAM LED
POWER CABLE	H05RN-F 2X1.0mm <sup>2</sup> L=0.5m(low voltage) H05RN-F 3X1.0mm <sup>2</sup> L=0.5m(high voltage)
RECESSED SLEEVE MATERIAL	PC/ABS ALLOYS



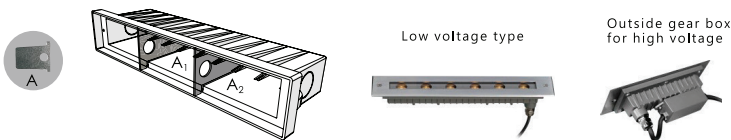
# References

Reference	Led Power	Luminous flux	Input Voltage	CCT/K	IK Rating	IP Rating	Optics	Dimensions
LX-IG-57-6W	3×2W	395-508lm	AC100-240V DC24V	2000K/3000K /6000K	IK08	IP67	13°/25°/30°	H63*L195*W65mm
LX-IG-57A-6W	3×2W	340-344lm					35°/45°	
LX-IG-57-12W	6×2W	733-1100lm					13°/25°/30°	H63*L328*W65mm
LX-IG-57A-12W	6×2W	823-875lm					35°/45°	
LX-IG-57-2-12W	12×1.0W	1220lm			IK07		9°/15°/20° /30°/45°	H83*L565*W81mm
LX-IG-57A-18W	12×1.5W	1020-1108lm					35°/45°	H68*L549*W31.5mm
LX-IG-57-24W	24×1.0W	2240lm					9°/15°/20° /30°/45°	H83*L1045*W81mm
LX-IG-57A-36W	24×1.5W	2114-2472lm					35°/45°	H68*L1025*W31.5mm

Order code : Reference - Power - Luminous flux - CCT/K - Optic

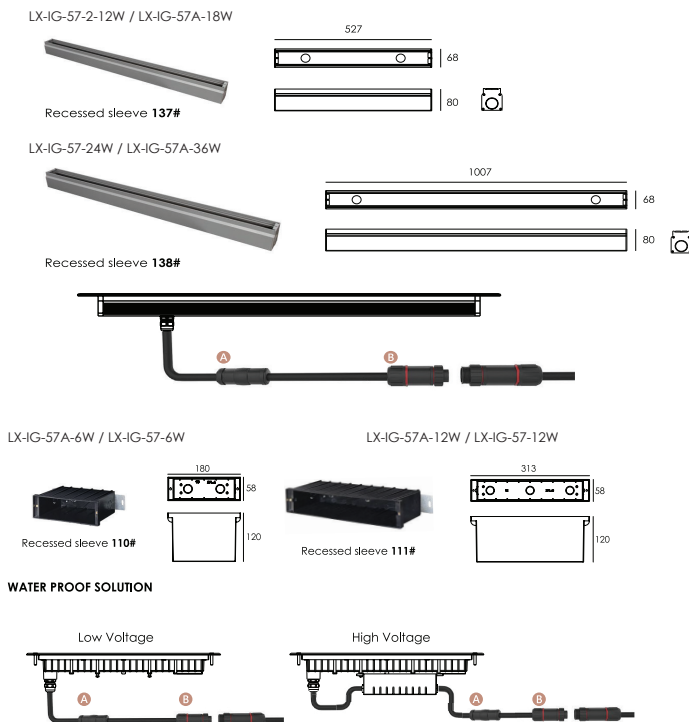
Important : All the specification can be customized as per the project request .

## Mounting Sleeve Characteristic



- The above picture – the supporting plate “A1” and “A2” are used for preventing deformation of the sleeve during the construction installation process.
- Please remove the supporting plate “A1” and “A2” from the mounting sleeve before the lamp installation.

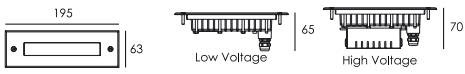
## Water Proof Solution & Sleeve (Included)



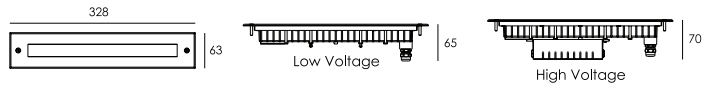
- A Water-Stopper(Included)**  
The luminaire will generate high temperature when used, which will generate negative pressure when the power is turned off also brings water vapor into the luminaire. That's why the device is required to block the entry of water vapor.
- B IP67 Jiffy quick plug/socket connector(Optional)**  
To prevent water vapor into luminaire via wire which had been cut, the air contains lots of steams when raining, spray or in humid environment, the luminaire will generate high temperature when used, which will generate negative pressure when the power is turned off also brings water vapor into the luminaire.

# Dimensions

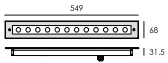
LX-IG-57A-6W / LX-IG-57-6W



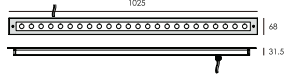
LX-IG-57A-12W / LX-IG-57-12W



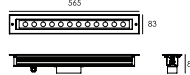
LX-IG-57A-18W



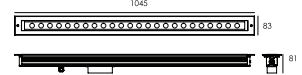
LX-IG-57A-36W



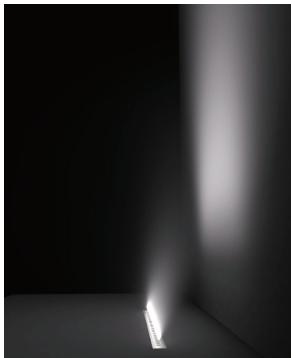
LX-IG-57-2-12W



LX-IG-57-24W



# Beam Demo



# Impression Drawing of Lens

