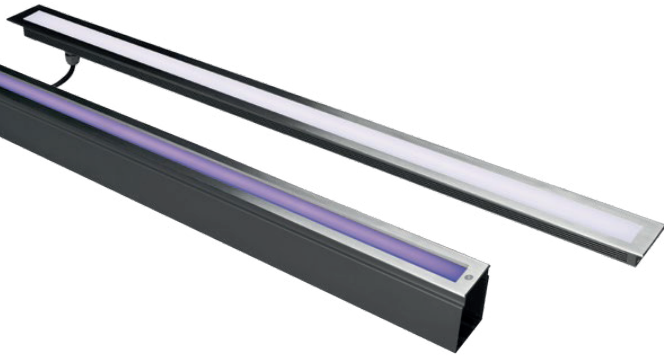


INGROUND

LX-IG-58



Inground

HOUSING 12# Die-casting dark grey powder coated aluminum T=60-80µm.

FRONT RING Hard chromeplated Stainless steel SUS 316L#

LIGHT WINDOW Tempered frosted step glass.T=8mm

OPERATING TEMPERATURE -20°C~40°C

LED Type NICHIA LED 3030@0.5W

POWER CABLE H05RN-F 2X1.0mm² L=0.5m(low voltage)
H05RN-F 3X1.0mm² L=0.5m(high voltage)

MOUNTING SLEEVE Powder Coated Aluminum 137# 138#

RECESSED SLEEVE MATERIAL PC/ABS ALLOYS



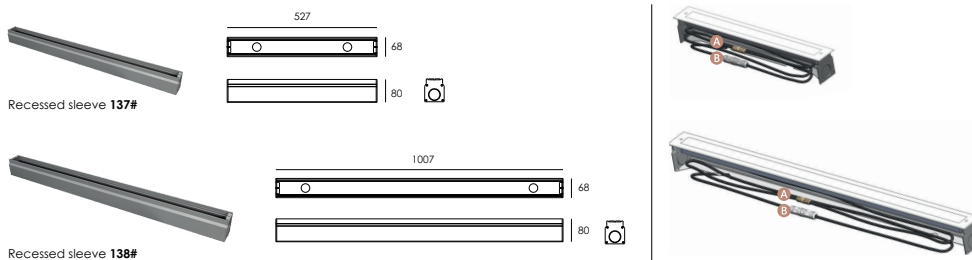
References

Reference	Led Power	Luminous flux	Input Voltage	CCT/K	IK Rating	IP Rating	Optics	Dimensions
LX-IG-58-14.4W	48×0.3W	274-300lm	AC100-240V DC24V	2000K/3000K/6000K	IK07	IP67	120°	H68*L549*W53mm
LX-IG-58-28.8W	96×0.3W	545-602lm						H68*L1025*W53mm

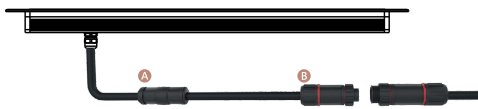
Order code : Reference - Power - Luminous flux - CCT/K - Optic

Important : All the specification can be customized as per the project request .

Water Proof Solution & Sleeve (Included)



WATER PROOF SOLUTION



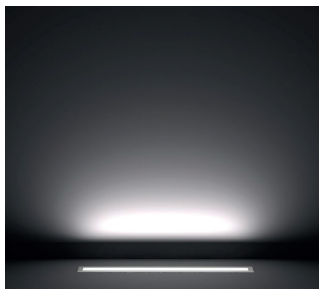
Ⓐ Water-Stopper(Included)

The luminaire will generate high temperature when used, which will generate negative pressure when the power is turned off also brings water vapor into the luminaire. That's why the device is required to block the entry of water vapor.

Ⓑ IP67 Jiffy quick plug/socket connector(Optional)

To prevent water vapor into luminaire via wire which had been cut, the air contains lots of steams when raining, spray or in humid environment, the luminaire will generate high temperature when used, which will generate negative pressure when the power is turned off also brings water vapor into the luminaire.

Beam Demo



Dimensions

