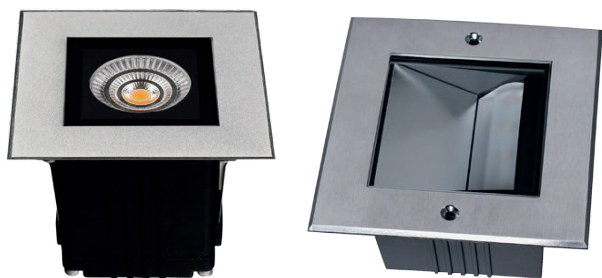


INGROUND

LX-IG-9

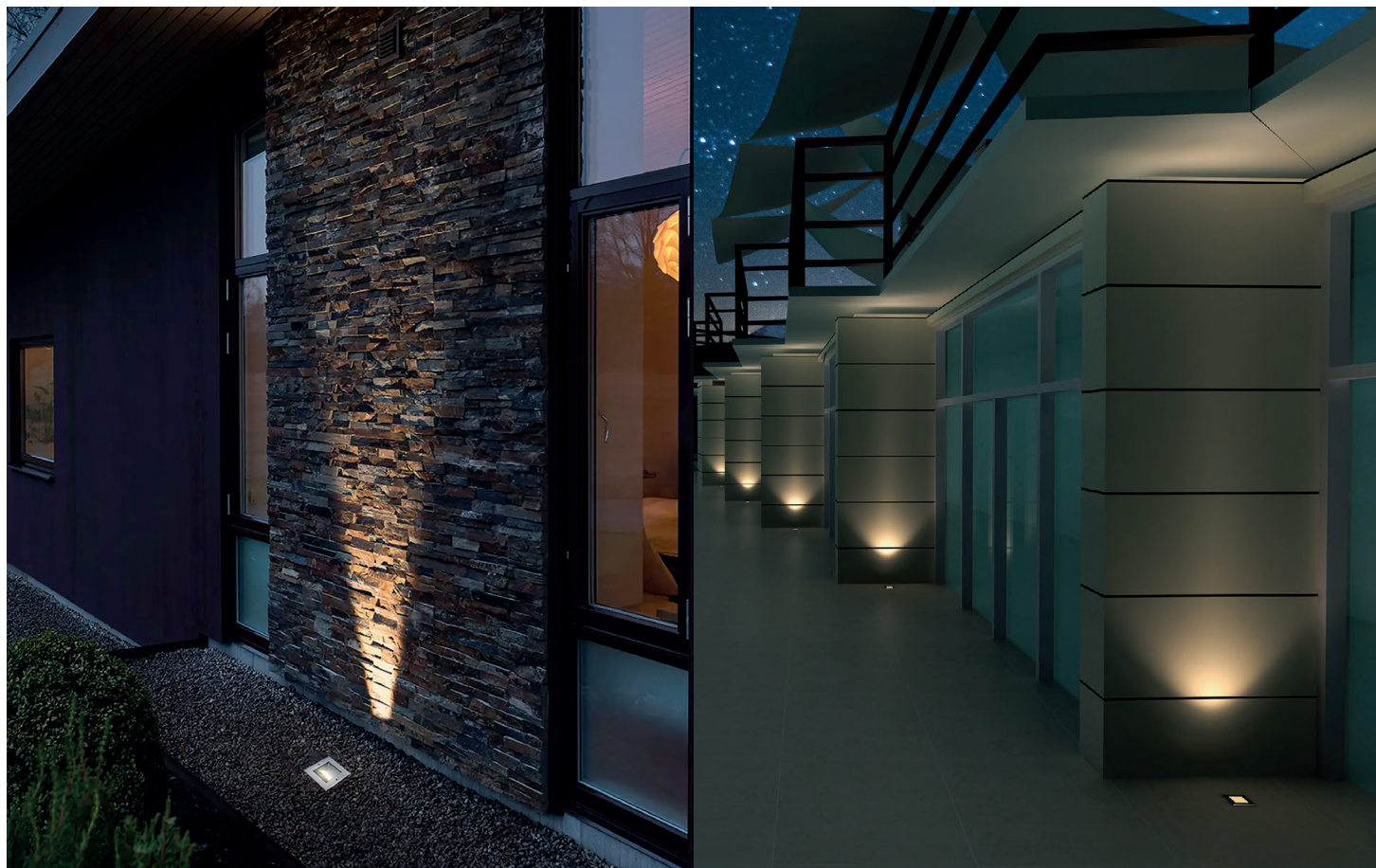
IP 67	IK 07/09	AC100-240V DC24V	TRIAC	PMW	1-10V	
-----------------	--------------------	-----------------------------------	--------------	------------	--------------	--

				50000h
--	--	--	--	---------------



Inground

FRONT COVER	Hard chromeplated Stainless steel SUS 316L#
HOUSING	12# Die-casting grey powder coated aluminum
LIGHT WINDOW	T=60-80µm Adhesion of ISO class 1/ASTM class 4B Tempered step glass.T=8mm
GASKET	Silicon rubber molding shaped seal
POWER CABLE	H05RN-F 2×1.0mm ² L=0.5m(low voltage) H05RN-F 3×1.0mm ² L=0.5m(high voltage)
CABLE GLAND	IP67 Nickel coated copper
LED TYPE	NICHIA
LED DRIVER	Constant Voltage Input ,Constant Current Output
RECESSED SLEEVE MATERIAL	PC/ABS ALLOYS
GLASS PRESSURE CAPACITY	Full area=2,578kgs
OPERATING TEMPERATURE	-20°C~40°C



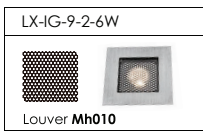
References

Reference	Led Power	Luminous flux	Input Voltage	CCT/K	IK Rating	IP Rating	Optics	Dimensions
LX-IG-9-2-6W	1*6W	910lm	DC 24V 120/240V	2000K/3000K/ 6000K	IK07	IP67	18°/25°/40°	H100*L100*W82.5mm
LX-IG-9A-2-6W	4*1.5W	491lm			IK09		80°×60°	

Order code : Reference - Power - Luminous flux - CCT/K - Optic

Important : All the specification can be customized as per the project request .

Honeycomb Louver (Option)

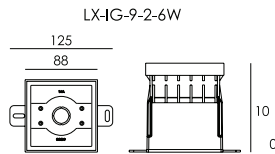
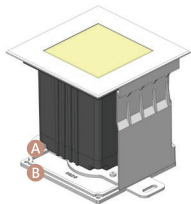


- Optional Accessory Honeycomb Louver
- The measured luminous flux data does not contain the honeycomb, and the data containing is reduced 20 to 30%.

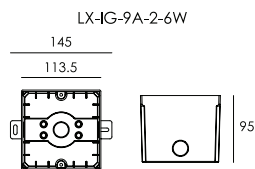
Beam Demo



Sleeve (Included)



Recessed sleeve #092#



Recessed sleeve #89

Metal Plate

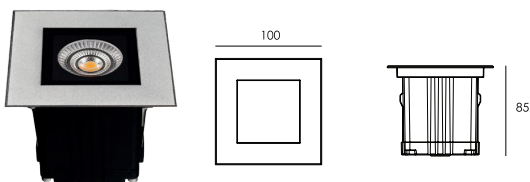


- There are two metal support plates on the bottom of the sleeve. It is used for fixing and preventing the mounting sleeve shifting while filling the concrete.

- These will be simply installed by the electrician while they are recessing the sleeves.

Dimensions

LX-IG-9-2-6W



LX-IG-9A-2-6W

