

DOWNLIGHT



GRACE

IP	CRI	UGR	AC220-240V	Dim-DALI
65	≥80	19		0/1-10V



GRACE DOWNLIGHT

Grace is an LED Downlight series with trim and trimless versions in IP65 construction forms for the application sectors : office, retail, hotel, villa, shopping mall, balcony, bathroom as well as some wet environment.

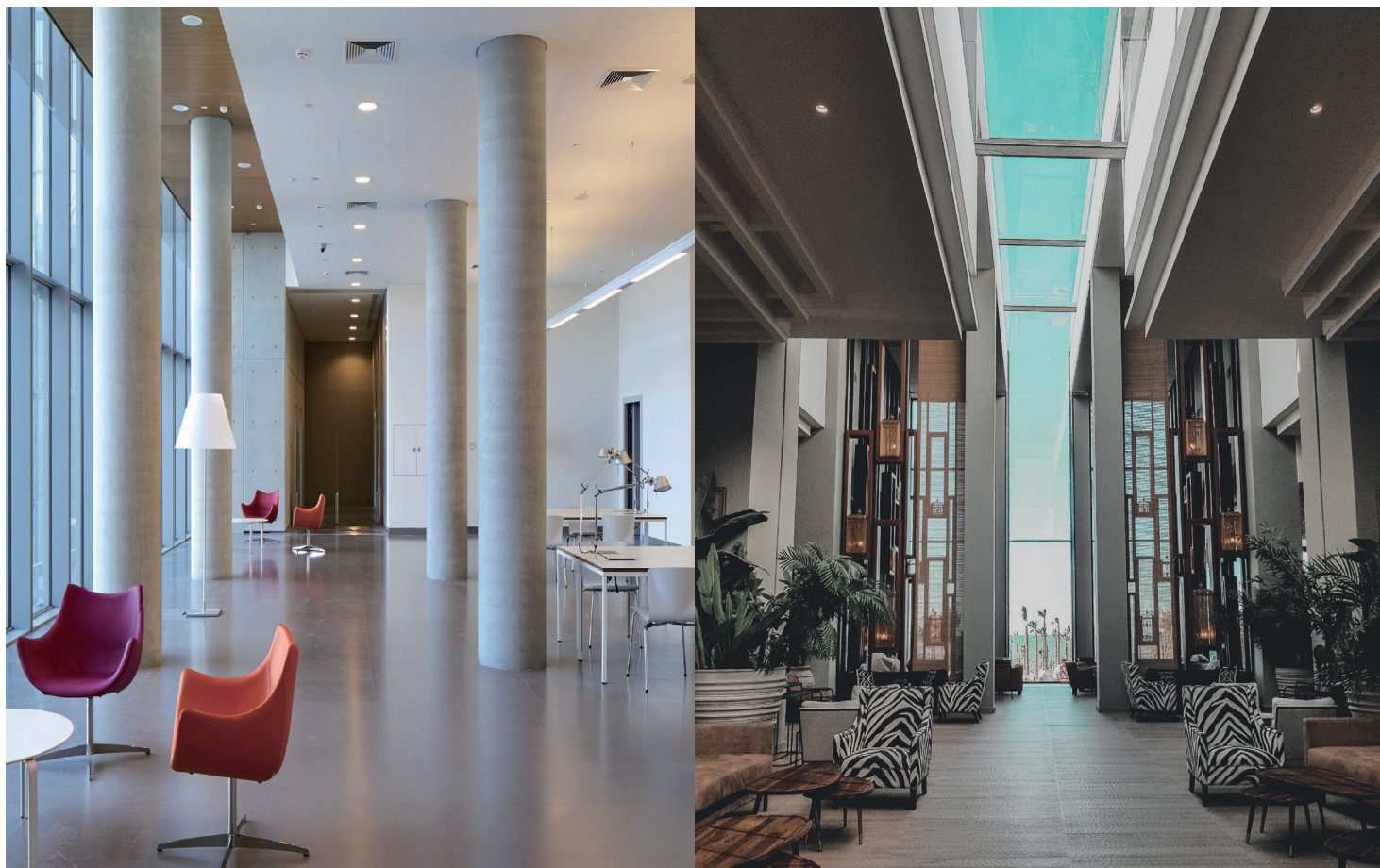
The LED downlights enable the efficient and high quality illumination of workplaces and traffic routes.

They are ideal for general lighting in retail environments as well as accent and all-purpose lighting in office and hotel applications.

The use of innovative technology and premium materials as well as a diversity of reflector's finishing in chrome/matt black/matt white make grace truly unique.

Housing : Aluminum with painting finishing

Heat sink : Die cast aluminum



References

Reference	Led Power	Luminous flux	CCT/K	OPTICS	IP Rating	Dimensions	Adjustable
LX-DL-83100F	15W	1800lm	2700K/3000K/4000K /5000k	20°/30°/40°/60°	IP65	Ø108*85mm	—
	18W	2120lm					
LX-DL-84150F	30W	3600lm					
	35W	4200lm				Ø160*108mm	

Order code : Reference - Power - Luminous flux - CCT/K - Optic

Important : All the specification can be customized as per the project request .

OPTICS



20°

30°

40°

60°

Optional colors for reflector



Black



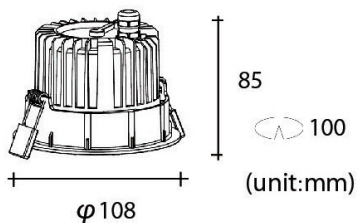
White



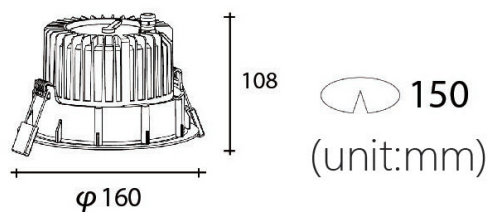
Chrome

Dimensions

LX-DL-83100F



LX-DL-84150F



Features

