

DOWNLIGHT

JUPITER



IP	CRI	AC220-240V
20	RA>90	



JUPITER DOWNLIGHT

Compatible with environment where there is drop ceiling.

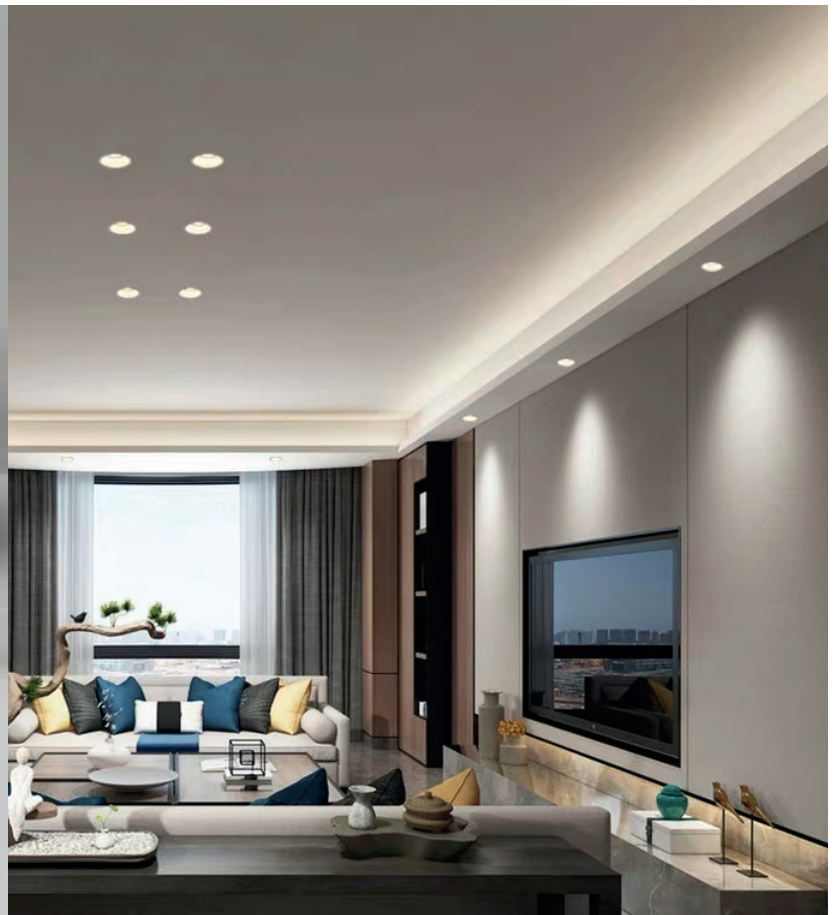
Heat sink in aviation aluminum keeps the LED chip of fitting working with a low temperature and working for a long time.

High performance LED chip create beautiful speckle.

Made of high quality materials,High temperature resistance, good light transmittance. There are many angles to choose, can solve the different space needs.

Honeycomb design provide visual comfort.

Made of high quality aluminum.



References

Reference	Led Power	Luminous flux	Input Voltage	CCT/K	OPTICS	IP Rating	Dimensions
LX-DL-12055F	5W	325lm	AC220-240V	2700K/3000K/4000K	15°/24°/36°	IP20	Ø60*38mm
LX-DL-12065F	7W	455lm					Ø70*38mm
LX-DL-12075F	12W	780lm					Ø82*40mm
LX-DL-12095F	20W	1300lm					Ø102*46mm

Order code : Reference - Power - Luminous flux - CCT/K - Optic

Important : All the specification can be customized as per the project request .

OPTIONAL COLOR

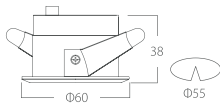


White

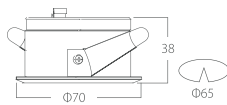
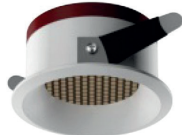
Black

Dimensions

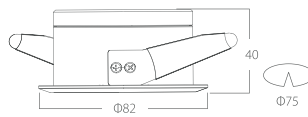
LX-DL-12055F



LX-DL-12065F



LX-DL-12075F



LX-DL-12095F

