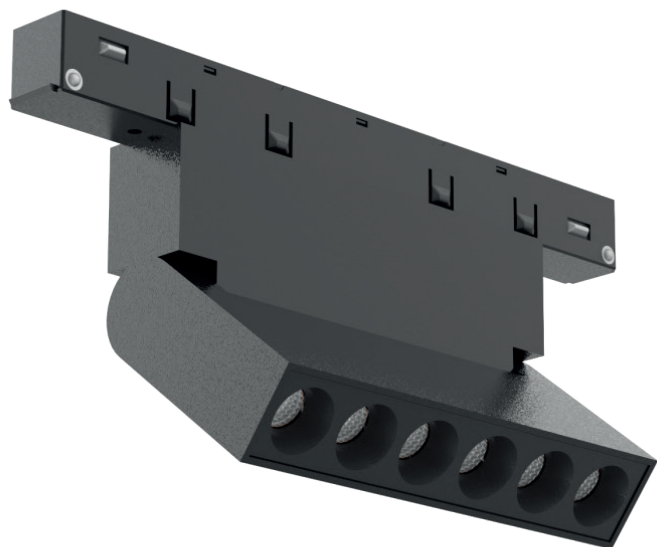


MAGNETIC TRACK LIGHT



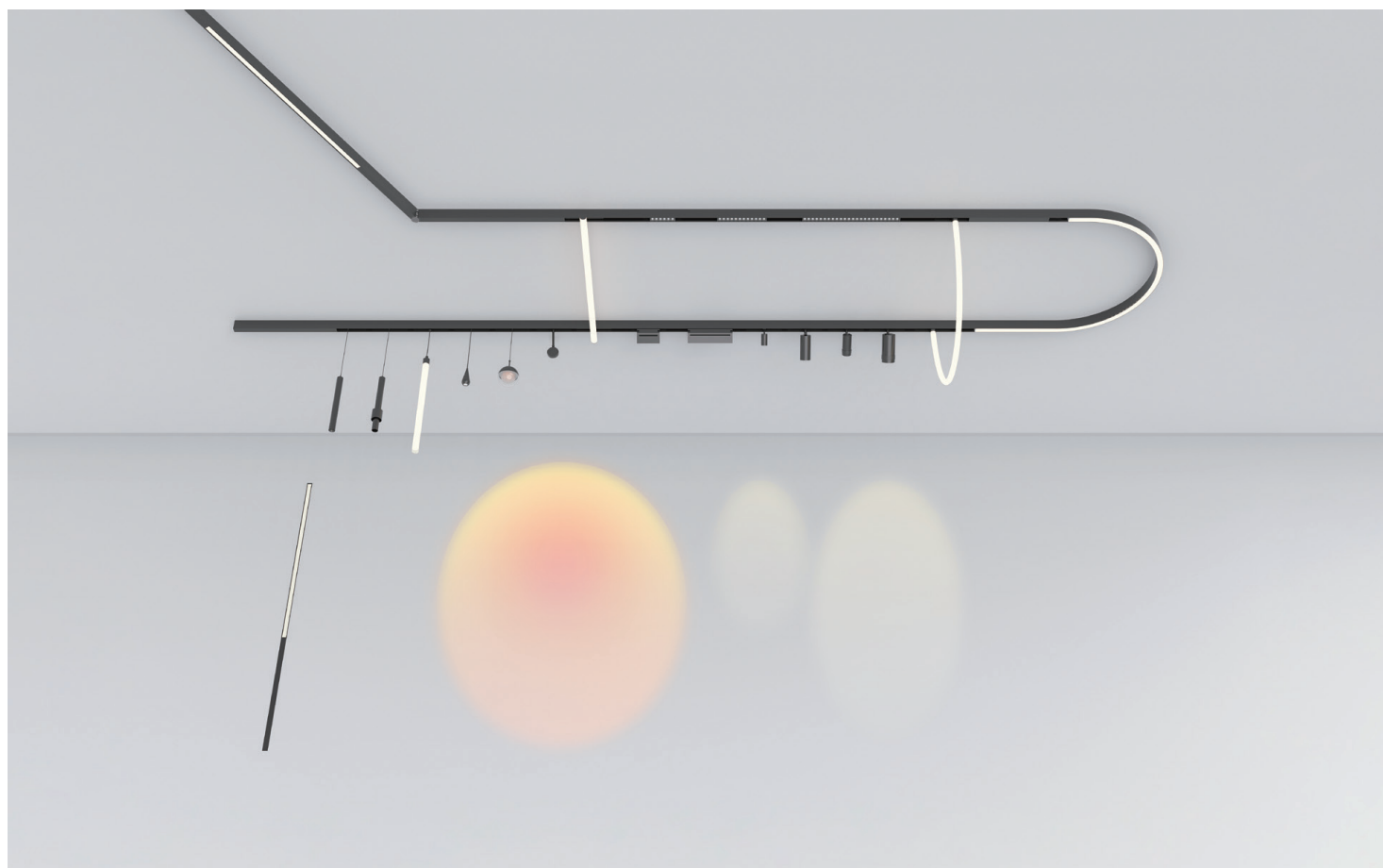
LX-DL-M20G(A)

IP 20	CRI >90	SDCM <3 Step	DC48V
-----------------	-------------------	------------------------	--------------

		CASAMBI
--	--	----------------

	CE	RoHS	50000h
--	-----------	-------------	---------------

- Material: AL6063-T5, spraying surface
- Coating: Black (RAL9005)
- Length: 110mm/220mm optional
- CCT: 2700/3000/3500/4000K optional
- Light efficiency: 70/67 lm/W
- Lighting direction: downward
- Application: Indoor



References

Reference	Input Voltage	Type Power	Max Power	Luminous flux	CRI	CCT/K	Beam Angle	IP Rating	Length
LX-DL-M20G -(A)	48VDC	6W	6.6W	385lm	>90	2700K	30°	IP20	110mm
				390lm		3000K			
				400lm		3500K			
				420lm		4000K			
		365lm	2700K	40°					
		370lm	3000K						
		385lm	3500K						
		400lm	4000K						
	12W	13.2W	770lm	>90	2700K	30°			
			780lm		3000K				
			805lm		3500K				
			840lm		4000K				
			730lm		2700K	40°			
			745lm		3000K				
			765lm		3500K				
			800lm		4000K				

1. The output data is based on the testing result of Ra90,4000k luminaires;
2. The tolerance of output data can be vary up to 10%;
3. The output data is typical value.

Dimensions

