

STREET LIGHT



LX-SL-01-G9

IP	IK	CRI	AC100-277V
66	10	>70	

5 GARANTIE	LUMILEDS	CE	CB	RoHS	IEC EN60598	50000hrs
----------------------	-----------------	-----------	-----------	-------------	-----------------------	-----------------

LED street light LX-SL-01-G9

The luminaire apply lens design directly to reduce light decay greatly, lighting efficiency can be achieved more than 160 lm/w.

Ensure that the entire area can be adequately illuminated. At the same time, it can also save costs, reduce weight, and enhance the market competitiveness of lamps.

LED Type

High efficacy and high quality color rendering makes the 5050 suitable use in a broad range of applications;

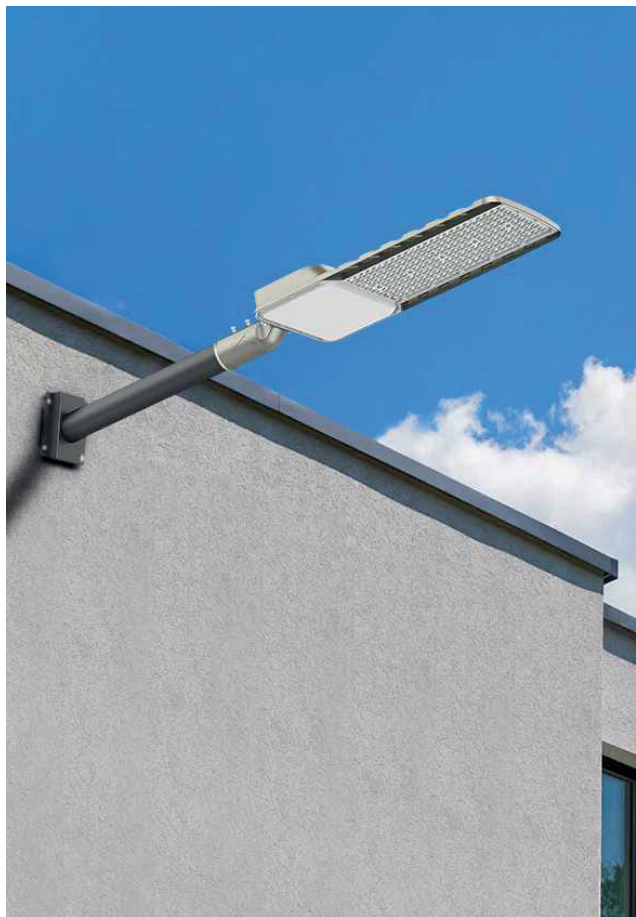
High efficiency and Energy saving Leds.

Lens

Type 11-M(148°88°);

IK10 Anti-UV PC Lens >95% Light Transmission;

High transmittance PC lens, strong protection and good optical function.



luxio
L I G H T I N G

www.luxio-lighting.com

References

Reference	Lamp power	Luminous Efficacy	CCT/K	OPTICS	Net Weight
LX-SL-01-G9	50W	160lm/W	3000K/4000K/5000K /5700K	Type II-M (148*88°)	2.20kg (4.85Lbs)
	60W				2.20kg (4.85Lbs)
	80W				2.20kg (4.85Lbs)
	100W				2.20kg (4.85Lbs)
	120W				3.20kg (7.05Lbs)
	150W				3.20kg (7.05Lbs)
	180W				3.20kg (7.05Lbs)
	200W				3.20kg (7.05Lbs)
	240W				5.20kg (11.5Lbs)
	300W				5.20kg (11.5Lbs)

Order code : Reference - Power - Luminous flux - CCT/K - Optic

Important : All the specification can be customized as per the project request .

Model Options

— Street light Arm pole



— Street light Single pole



50W/60W/80W/100W

120W/150W/180W/200W

240W/300W



LX-AC-K01



LX-AC-K02

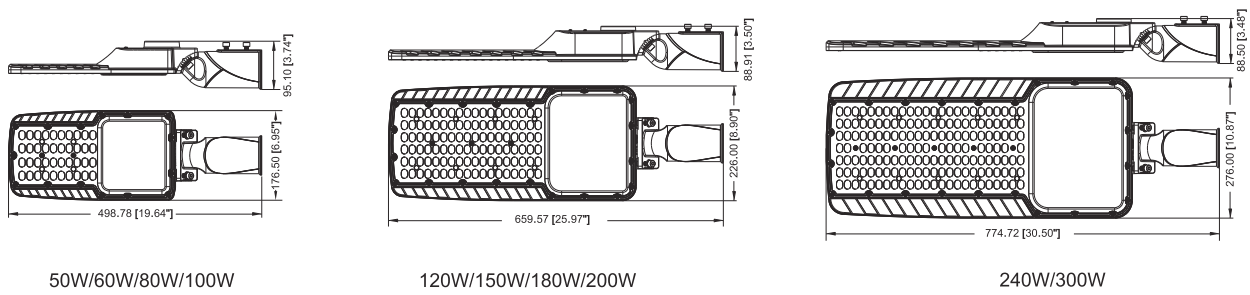


LX-AC-K03

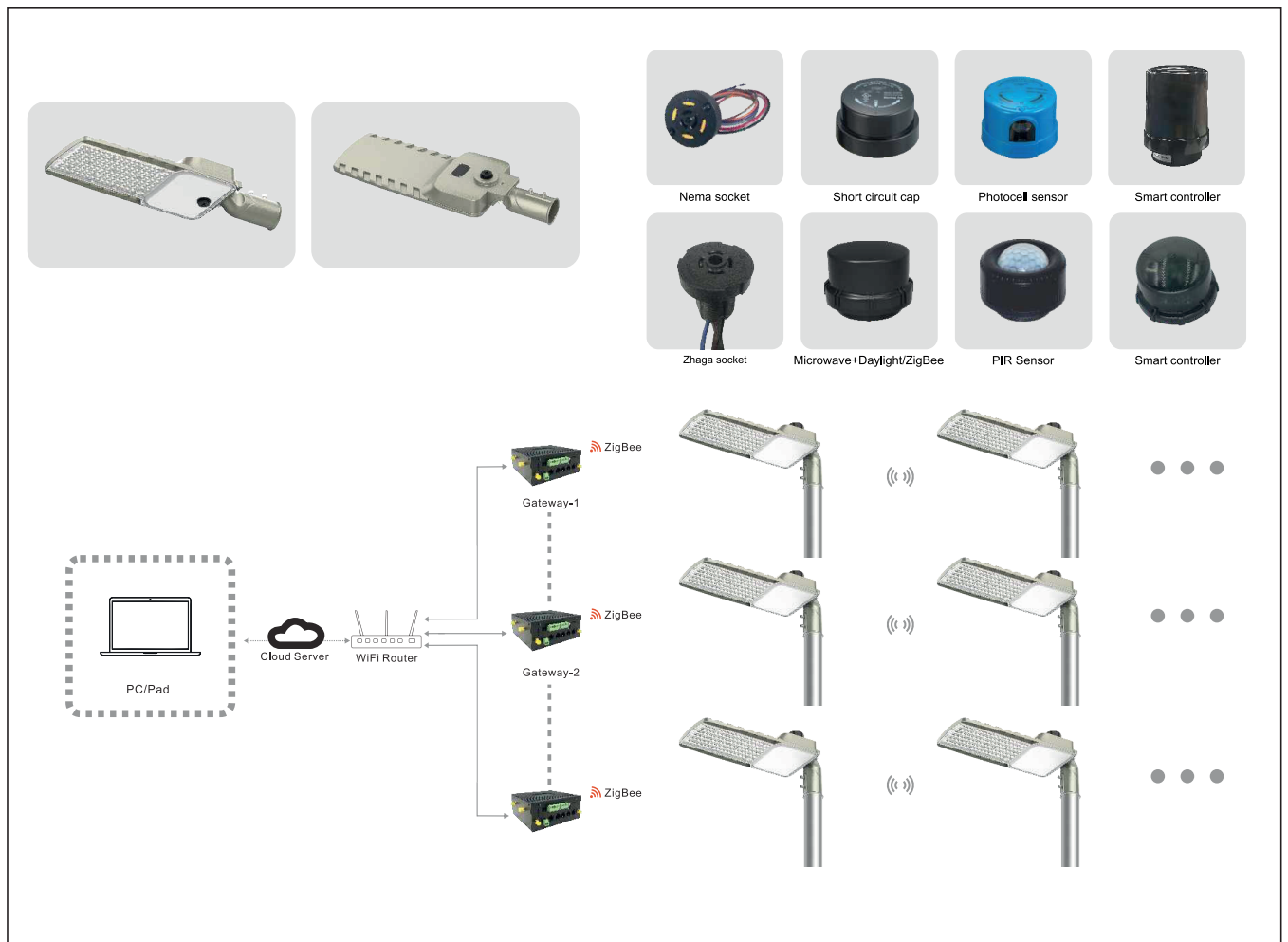


www.luxio-lighting.com

Dimensions(mm)

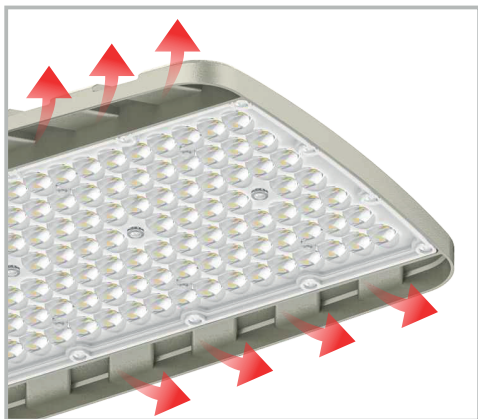


Remote control system



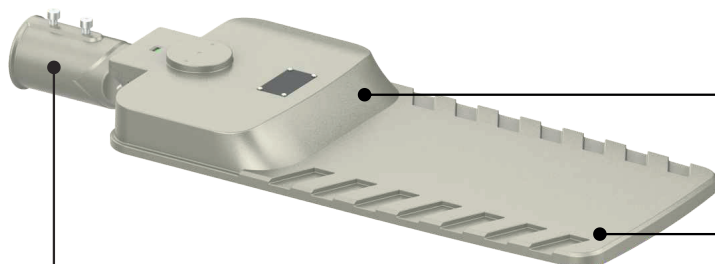
IP66 Waterproof

- ▶ Tooling Thickness Waterproof rubber ring;
- ▶ IP66 waterproof connector;
- ▶ SPD 10KV (Standard)
- ▶ SPD 20KV (Optional).



Perfect heatsink

- ▶ Perfect heat dissipation , ADC12 die-casting aluminum body ;
- ▶ High heat conductivity and quickly heat dissipation.
- ▶ Its excellent heat dissipation performance guarantee the lifespan of fixture over 50,000 hours.



Multiple Installation

Holder with 2 installations(Arm & Pole).

Self-clean

Smooth body would greatly diminish dust accumulation and bird droppings heap up.

Housing Material

- ▶ High Strength ADC12 Die-casting Aluminum
- ▶ Stronger Outdoor powder for harsh environments.

High Light Transmission

Ik10 Anti-UV PC Lens
> 95% Light Transmission



Dia: Ø66mm(2.60")

▶ Suit for Ø52-63.5mm(Ø2.05-2.50")